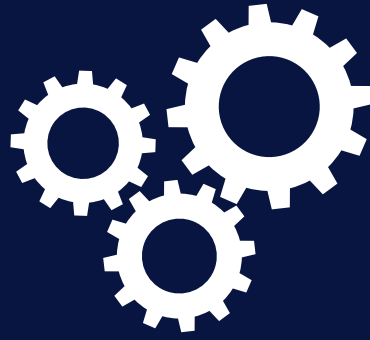


# NATIONAL MANUFACTURING & SUPPLY CHAIN CONFERENCE & EXHIBITION



In Partnership With



**Engineering  
Industries Ireland**  
Ibec



**Pharma &  
MedTech**  
EXPO

Linde Material Handling

*Linde*



Inspire3D

**KUKA**

SWISELOG



ifm electronic



IRISH  
MANUFACTURING  
RESEARCH



Engenuity  
Midlands Engineering Network

**WINSOURCE**  
ELECTRONICS

**DNA** IT SOLUTIONS

**CIRCLE** K



**KEMPSTON  
CONTROLS**



We complete  
the package



HANLEY AUTOMATION



**RITTAL**

**zetes**



[www.manufacturingevent.com](http://www.manufacturingevent.com)



Free GUEST Wifi: RDS-Wi-Fi No password Required



@NationalMSC #ManufacturingExpoIRE



Manufacturing & Supply Chain Conference & Exhibition

# Main Stage Day 1: National Manufacturing & Supply Chain Conference and Exhibition

## Main Stage Day 1: National Manufacturing & Supply Chain Conference and Exhibition

| Times       | Name  | Topic  |
|-------------|---|--|
| 9.55-10.00  | Pauline O’Flanagan, Director, Engineering Industries Ireland, IBEC  | Opening Remarks  |
| 10.00-10.20 | Alec Drew, Founder, The Business Expert   | Increase Productivity, Morale and retain Talent by embracing The Intergenerational Workplace                                     |
| 10.20-11.00 | Henrik Von Scheel, Strategist, Futurist, Originator of the “4th Industrial Revolution”  | Factory 4.0: Megatrends that shape the next decade   |
| 11.00-11.10 | <b>COFFEE BREAK &amp; NETWORKING</b>  |  |
| 11.10-11.50 | Andrew Lynch, Chief Innovation Officer, Irish Manufacturing Research  | Sex, Lies and the Industrial Metaverse   |
| 11.50-12.30 | <b>Moderator:</b> Gema Antequera, Head of Future Industry EU Projects Area, CTAG<br><b>Panellists:</b> Ruth Kearney, CEO, Nightingale HQ<br>Victor Alonso Ramos, Head Process & Factories Of The Future Department, CTAG, Brian Cooney, Managing Director, KUKA Robotics Ireland, TBC-UCD | Stepping up: Transforming Roles, Advancing Diversity Altogether  |
| 12.30-13.00 | <b>LUNCH &amp; NETWORKING</b>   |  |
| 13.00-13.40 | <b>Moderator:</b> Graham O Regan, Managing Director, Graham O’Regan Leadership<br><b>Panellists:</b> Jeanne Mc Donagh, CEO, Open Doors Initiative, Kevin Empay, CEO, Work Matters, Jacintha O Donohoe, Strategy and Leadership Consultant, The Core Story                                 | The Future of Work   |
| 13.40-14.00 | Wilderich Heising, Partner & Associate Director, Boston Consulting Group  | The World in Turmoil? Mastering the manufacturing and distribution network strategy and optimization and ensuring product supply |
| 14.00-14.20 | Joan Mulvihill, Digitalisation & Sustainability Lead, Siemens   | Creative Leadership for industrial transformation through Permacrisis  |
| 14.20-14.40 | Robert van Vliet, Regional Director, Zetes  | The Future of Logistics: The Impact of Collaborative Supply Chains   |
| 14.40-15.20 | <b>Moderator:</b> Tiago Mendes, Knowledge & Innovation Manager, EIT Manufacturing<br><b>Panelists:</b> TBC  | Fostering Sustainable Innovation in Manufacturing  |
| 15.20-15.25 | Alec Drew, Founder, The Business Expert   | Closing Remarks  |



In Partnership With



All presentations/timetables are subject to change. Please check with onsite event timetable on the day.

Full exhibitor profiles available on the website [www.manufacturingevent.com](http://www.manufacturingevent.com) | Full speaker profiles available on the website [www.manufacturingevent.com](http://www.manufacturingevent.com)



[www.manufacturingevent.com](http://www.manufacturingevent.com)



@NationalMSC #ManufacturingExpoIRE



Manufacturing & Supply Chain Conference & Exhibition



# Engineering Industries Ireland

---

Ibec



“On behalf of Engineering Industries Ireland, as headline sponsor, I extend a warm welcome to the 2024 Manufacturing and Supply Chain Conference and Exhibition. We are grateful for the continued support and commitment of event organisers Premier Publishing & Events.

As the voice of engineering businesses in Ireland, Ibec newest trade association, Engineering Industries Ireland collaborate with political leaders and other industry bodies to empower our members with influence over local and national industry related issues. We also leverage our position to raise the sector’s profile at events and in the media, celebrating its successes and addressing its challenges.

Manufacturing in Ireland stands as one of the high-performing engines of our economy, with clusters of world-class operations in sectors such as biopharmaceuticals, engineering, medical technology, building materials, and food production. Annually, the sector contributes an impressive €13.4 billion in wages and employment taxes, setting new records by exporting goods worth €208 billion in 2022.

Moreover, it shoulders a significant portion of our nation’s corporation tax revenue, exceeding €10 billion, ensuring adequate resources for essential public services. The Irish manufacturing sector employs 275,000 people throughout the regions, constituting 11% of total employment.

In November 2023, Ibec launched the “Manufacturing in Ireland” report, indicating that manufacturers are cautiously optimistic about the business environment. The report highlights competitiveness and the cost of doing business as significant challenges. Attracting and retaining staff emerge as major concerns for 67% of business leaders, with 72% anticipating wage increases.

This event covers the full breadth of Ireland’s manufacturing and engineering supply chain, including energy, renewables, transportation, engineering, marine, security, electronics, food and drink, biopharma, medtech, construction, and textiles. It showcases the best supporting technologies, from robotics and automation to 3D printing.

Industry knows that the way to work our way out of challenging times is to work together, to collaborate and bring complementary skills and knowledge that allow progress to be rapid and effective. Events like today are designed to make that ambition easy, with such a broad representation of ideas and physical capability all under one roof.

I extend my gratitude to all exhibitors, speakers, and visitors for choosing to participate and contribute to its growing success.

**Pauline O Flanagan,**  
**Director**

Many thanks  
Pauline

# Main Stage Day 2: Digital Transformation & AI Technologies

## Main Stage Day 2: Digital Transformation & AI Technologies

| Times       | Name   | Topic   |
|-------------|--|---|
| 9.55-10.00  | Brian Barry,   | Opening Remarks   |
| 10.00-10.20 | Marc O'Regan, CTO, Dell  | TBC - AI  |
| 10.20-11.00 | Henrik Von Schell, Strategist, Futurist, Originator of the "4th Industrial Revolution"   | The Bio-Revolution  |
| 11.00-11.20 | Carlos Garcia Santiago, Head of AI Strategy, Irish Manufacturing Research  | Beyond Automation: Human Wisdom in the AI Revolution  |
| 11.20-11.40 | Suresh Daniels, Group Director for Data & Architecture Integration, Coats Plc  | Emerging Technologies such as AI  |
| 11.40-11.50 | <b>COFFEE BREAK &amp; NETWORKING</b>   |   |
| 11.50-12.30 | <b>Moderator:</b> TBC<br><b>Panellists:</b> Kenny Watson, Carlos Garcia Santiago, Head of AI Strategy, Irish Manufacturing Research, Ian Gardner, UK Account Technical Leader, IBM | The Future of Smart Factories: AI-Powered Manufacturing   |
| 12.30-12.50 | Damian Costello, Head of Life Sciences & Technology – Expleo Group   | "Caveat Emptor – Buyer Beware: 5 things Digital Transformation vendors don't want manufacturing buyers to know" |
| 12.50-13.10 | Tristan McCallum, Senior Technologist, IDA Ireland   | "Revolutionising Industry: Supporting the Advanced Manufacturing Transformation in Ireland"                     |
| 13.10-14.10 | <b>Moderator:</b> TBC<br><b>Panelists:</b> Tony Woods<br>Ruth Kearney, CEO, Nightingale HQ   | "Reimagining Design and Planning for Sustainable Steel Manufacturing: A Collaborative Approach"                 |
| 14.10-14.30 | Ian Gardner, UK Account Technical Leader, IBM  | Generative AI - What does it mean for supply chains and manufacturing   |
| 14.30-14.35 | Brian Barry  | Closing Remarks   |

NATIONAL  
**MANUFACTURING  
& SUPPLY CHAIN**  
CONFERENCE & EXHIBITION

In Partnership With



**Engineering  
Industries Ireland**  
Ibec

**DIGITAL TRANSFORMATION  
& AI TECHNOLOGIES**



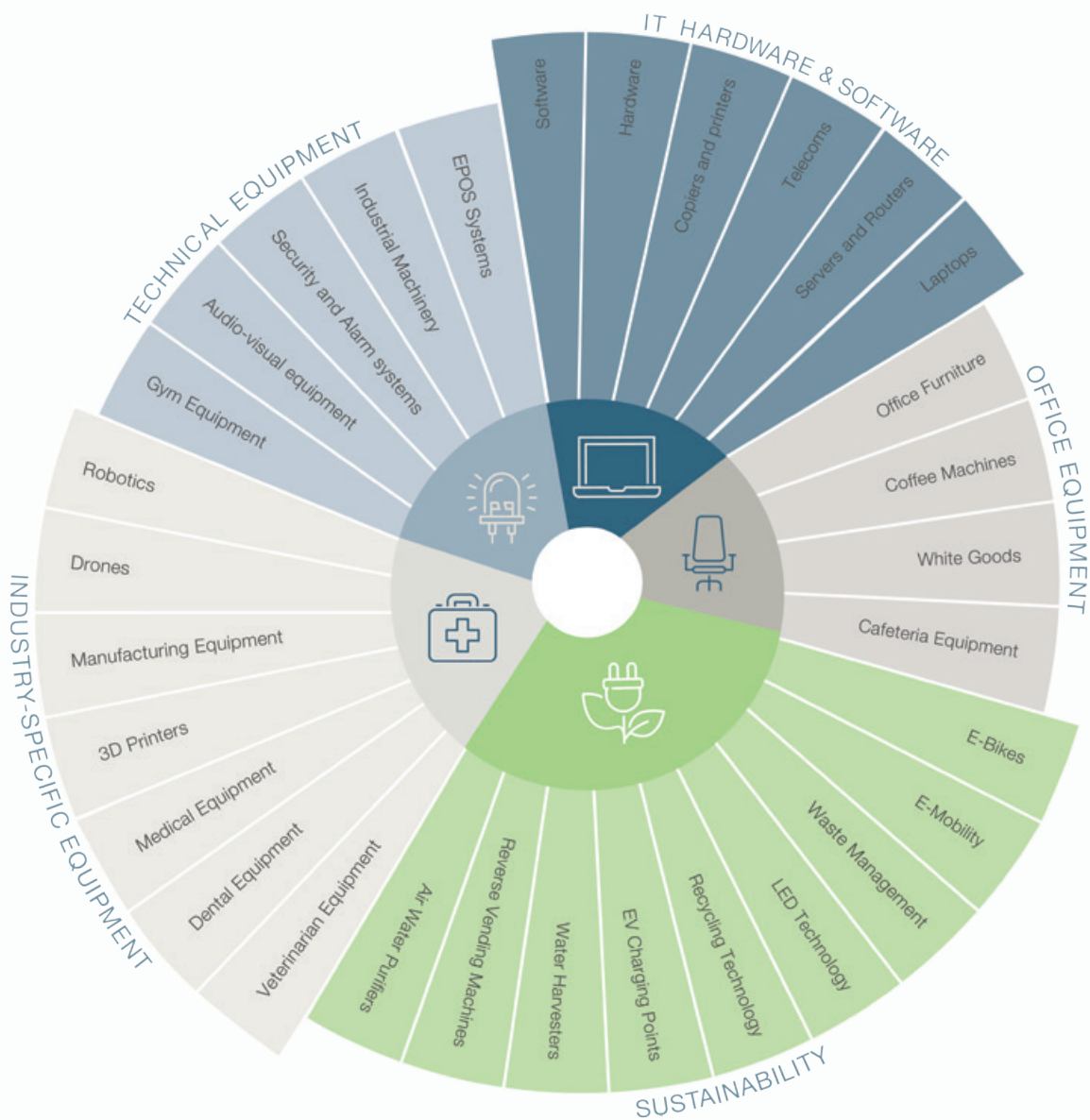
All presentations/timetables are subject to change. Please check with onsite event timetable on the day.

Full exhibitor profiles available on the website [www.manufacturingevent.com](http://www.manufacturingevent.com) | Full speaker profiles available on the website [www.manufacturingevent.com](http://www.manufacturingevent.com)

# GRENKE

FAST // FORWARD // FINANCE

## We Finance More Than You Think



Talk to a GRENKE  
Leasing Expert

☎ 01 292 3400  
✉ [sales@grenke.ie](mailto:sales@grenke.ie)  
🌐 [www.grenke.ie](http://www.grenke.ie)



# 3D Printing, High-Tech Manufacturing & Advanced Engineering - Day 1

## 3D Printing, High-Tech Manufacturing & Advanced Engineering - Day 1

| Times       | Name  | Topic   |
|-------------|---|---|
| 9.55-10.00  | TBC   | Opening Remarks   |
| 10.00-10.20 | Cathal Finch, Area Sales Manager - Ireland, Tyrolit Abrasives   | Metal & Composites: Surface Prep and Finishing Solutions  |
| 10.20-10.40 | Tom Fripp, Director, Addition   | It's Not All About the Printers - the Three Pillars of 3D Printing  |
| 10.40-11.00 | Joe Coogan, CEO, Vision 3D Solutions<br>Lasse Staal, CEO, Nexa  | Nexa 3D - Additive Manufacturing - Free Form Injection Molding (FIM) Process  |
| 11.00-11.20 | <b>COFFEE BREAK &amp; NETWORKING</b>  |   |
| 11.20-11.40 | Thomas Cornthwaite, UK Operations, DiManEx  | The Challenges and Rewards of Scaling Supply Chain Transformation Through Digitisation and Additive Manufacturing     |
| 11.40-12.00 | Paul Quinn, Lead Additive Manufacturing Applications and Training Engineer, Inspire 3D  | Unlock Flexible Manufacturing with Additive Manufacturing   |
| 12.00-12.20 | Jufan Zhang, Assistant Professor, UCD School of Mechanical and Materials Engineering  | Micro and Nano Manufacturing to Atomic Scale Manufacturing – Applications and Perspectives for Biomedical Innovations |
| 12.20-12.40 | Rachel Hersee, Product Development Chemist, Henkel 3D Printing  | Durable materials from Loctite 3DP solutions – Enabling 3D Printing of industrial end use parts.                      |
| 12.40-13.20 | <b>LUNCH &amp; NETWORKING</b>   |   |
| 13.20-14.00 | <b>Moderator:</b> Paul Quinn, Lead Additive Manufacturing Applications and Training Engineer, Inspire 3D<br><b>Panellists:</b> Michael Golden, Education & Public Engagement Manager I-Form, Ray O'Mahony, Symetri Ireland, Linda Levingstone, KWETB, Ben Johnson, Ultimaker GB | 3D Printing in Education and Training   |
| 14.00-14.20 | Barry P. Cox, Standards Officer, NSAI & Noel Harrison Standards Officer & Chair, Additive Manufacturing Committee   | Current Trends in International Standards Supporting Research in Additive Manufacturing                               |
| 14.20-14.40 | Kevin Murphy, Territory Sales Manager – UK & Ireland, 3DTechnology  | Bringing next level Additive Manufacturing to the Factory Floor.  |
| 14.40-15.00 | Ajay MV, Founder, Makkal  | Digital Calibration Management System   |
| 15.00-15.20 | Rokas Šakalys, PhD, Additive Manufacturing Research Engineer, SEAM Research Centre  | Embedding fully functional sensors into metal additively manufactured products  |
| 15.20-15.25 | TBC   | Closing Remarks   |

## 3D PRINTING HIGH TECH MANUFACTURING & PRECISION ENGINEERING



All presentations/timetables are subject to change. Please check with onsite event timetable on the day.

Full exhibitor profiles available on the website [www.manufacturingevent.com](http://www.manufacturingevent.com) | Full speaker profiles available on the website [www.manufacturingevent.com](http://www.manufacturingevent.com)



# DRIVEN BY INNOVATION

We've brought the ifm truck close to you!

Visit us at the National Manufacturing & Supply Chain Exhibition and step aboard the ifm truck to explore over 40 square meters of digitalization and automation, the orange way!

This presents a unique opportunity to explore our comprehensive portfolio of customized solutions, engage with interactive displays, witness live product demonstrations, and participate in training courses designed to inspire and inform.

Our team looks forward to welcoming you aboard the ifm truck!



**ifm** – close to you!



# Careers, Skills & Training - Manufacturing the Workplace - Day 2

## Careers, Skills & Training - Manufacturing the Workplace - Day 2

| Times       | Name  | Topic  |
|-------------|---|--|
| 9.55-10.00  | Barry Prost, Chair, Dublin Regional Skills Forum  | Opening Remarks  |
| 10.00-10.20 | Barry Prost, Chair, Dublin Regional Skills Forum  | The 6 key recruitment trends employers in Manufacturing are adopting in 2024       |
| 10.20-10.40 | Finbarr Sheehy, Director for Post Graduate Programmes and Research, Innopharma Education  | Critical Thinking: Thinking Deeply in a Shallow World                              |
| 10.40-11.00 | James Cuthbert, Senior Digital Operational Excellence Leader & Managing Director, Henkan  | The Unspoken Barrier to Organisational Change                                      |
| 11.00-11.30 | Peter Turley, Managing Director, Sell Squared   | Eureka! Making the Complex Compelling: A Guide to Selling Groundbreaking Ideas     |
| 11.30-11.50 | Siobhan Soraghan, Director, Active Insight  | Secrets of Unlocking Your Innovation Rol   |
| 11.50-12.30 | <b>LUNCH &amp; NETWORKING</b>   |  |
| 12.30-13.10 | <b>Moderator:</b> Barry Prost, Chair, Dublin Regional Skills Forum<br><b>Panellists:</b> Liz Carroll, Interim Learning and Development Director, Irish Manufacturing Research, John McLaughlin, Director, ShopFloorLive, Finbarr Sheehy, Director for Post Graduate Programmes and Research, Innopharma Education | Upskilling and Reskilling for the Digital Age of Manufacturing                     |
| 13.10-13.30 | Gema Antequera, Head of Future Industry EU Projects Area, CTAG<br>TBC   | STRADA- Empower women in manufacturing through leadership development globally     |
| 13.30-13.50 | Mark Masterson, Partner, The Partnering Group   | "Growth: The top Strategic Business Priority, how can Supply Chain be an enabler." |
| 13.50-14.10 | Barry Twomey, Centre Director, Advance Centre, UCD  | The Skills to Support Digital Transformation                                       |
| 14.10-14.30 | James Kearney, Network Manager, CILT Mobility & Supply Chain Skillnet   | Skills development opportunities for fast movers                                   |
| 14.30-14.35 | Barry Prost, Chair, Dublin Regional Skills Forum  | Closing Remarks  |

## CAREERS, SKILLS & TRAINING



ifm electronic



All presentations/timetables are subject to change. Please check with onsite event timetable on the day.

Full exhibitor profiles available on the website [www.manufacturingevent.com](http://www.manufacturingevent.com) | Full speaker profiles available on the website [www.manufacturingevent.com](http://www.manufacturingevent.com)



[www.manufacturingevent.com](http://www.manufacturingevent.com)



@NationalMSC #ManufacturingExpoIRE



Manufacturing & Supply Chain Conference & Exhibition





Stands  
L01 and N01A

## Additive Manufacturing Solutions

Looking to revolutionize your manufacturing process or unleash your creativity like never before? Look no further than Inspire 3D

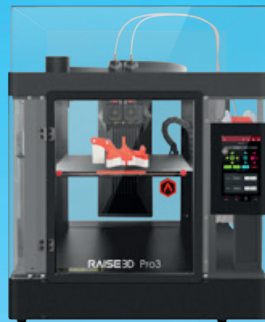
Ireland's premier, award-winning provider of 3D printers, consumables, and unparalleled support services!

From desktop wonders to industrial giants capable of creating intricate prototypes to end use customer parts, our range of 3D printers is unparalleled.

**formlabs** 



 **RAISE3D**



At Inspire 3D,  
we don't just sell printers

## We Empower Creators

Our team of 3D printing experts are here to provide comprehensive support every step of the way.

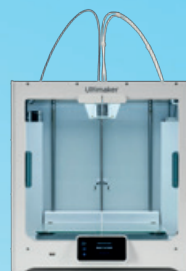
From setup and troubleshooting to advanced design tips and techniques, we're dedicated to ensuring your success.

Join the ranks of satisfied customers who have experienced the Inspire 3D difference.

Our commitment to innovation, quality, and customer satisfaction has earned us prestigious awards and accolades, cementing our position as industry leaders.

Elevate your projects with the extraordinary capabilities of 3D printing from Inspire 3D.

 **UltiMaker**



# Experience the future of manufacturing and creativity today!

+353 (0)404 80069

[www.inspire3d.ie](http://www.inspire3d.ie)

[info@inspire3d.ie](mailto:info@inspire3d.ie)

# Lean, Productivity & Continuous Improvement (AM) Future of Work (PM) - Day 1

## Lean, Productivity & Continuous Improvement (AM)

| Times       | Name   | Topic   |
|-------------|--|---|
| 9.55-10.00  | Stuart Nelson  | Opening Remarks   |
| 10.00-10.20 | Darren Woods,  | Organisational Performance 4.0: The health of your teams is central to the performance of your Organisation |
| 10.20-11.00 | <b>Moderator:</b> Stuart Nelson<br><b>Panelists:</b> Conor McAdam; Ultan Bannon; Alicia Garrigan   | Panel discussion: "One small step, one giant leap - Getting started with Lean"                              |
| 11.00-11.20 | <b>COFFEE BREAK &amp; NETWORKING</b>   |   |
| 11.20-11.40 | <b>Moderator:</b> Stuart Nelson<br>Eamonn McKenna & Ray O'Brien (Senco);   | Fireside chat: Wax On, Wax Off - The Coaching Relationship in Lean  |
| 11.40-12.20 | <b>Moderator:</b> Allyson English<br><b>Panelists:</b> Caitriona Mordan; Helena Humphries; Pauline O'Flanagan; TBC: John O'Reilly (Strikebox)" | Panel discussion: People & Community- building a Lean ecosystem   |
| 12.20-12.40 | Stuart Nelson  | TBC   |
| 12.40-13.00 | <b>LUNCH &amp; NETWORKING</b>  |   |

## Future of Work (PM)

|             |   |  |
|-------------|---|--|
| 13.00-13.20 | Ali Curry, Director, Anthesis                         | Turning Climate Ambitions into Action: challenges and opportunities in decarbonising organisations and supply chains |
| 13.20-13.40 | Tim Crowe, CEO & Co-Founder, WrxFlo                   | Optimising your business and the role AI can play in the drive to net zero?  |
| 13.40-14.00 | Nadun Muthukumarana, CEO, V2T                         | Harnessing AI for the Future of Work: Optimizing Manufacturing and Supply Chain Operations                           |
| 14.00-14.20 | Conor Carmody, Director, Skillnet Innovation Exchange | The only certainty is uncertainty!   |
| 14.20-14.40 | Barry Guiney, Partner, Odgers Berndtson               | The future of leadership and talent in the digital revolution age  |
| 14.40-15.00 | Norayr Nagapetyan, Managing Director, Nextensor       | The future of technical collaboration, upskilling and reskilling is here- Nextensor                                  |
| 15.00-15.20 | Ian McGill, Managing Director, IA Safety              | Cultural Shifts: Safety as a Core Value  |
| 15.20-15.25 | TBC   | Closing Remarks  |



LEAN, PRODUCTIVITY & CONTINUOUS IMPROVEMENT



FUTURE OF WORK



All presentations/timetables are subject to change. Please check with onsite event timetable on the day.

Full exhibitor profiles available on the website [www.manufacturingevent.com](http://www.manufacturingevent.com) | Full speaker profiles available on the website [www.manufacturingevent.com](http://www.manufacturingevent.com)

# READY TO AUTOMATE?

Boost productivity with affordable AGV solutions



❗ Challenge finding qualified operators?

❗ Damage costs getting out of control?

❗ Need a safer, cost-effective solution?

✔ Remove repetitive tasks

✔ Return on Investment in less than 2 years

✔ Make an appointment for a consultation

For a quotation or further information, please contact:  
anthony.cooke@linde-mh.ie | 0879 049635

→ [www.lindemh.ie](http://www.lindemh.ie)

# Lean, Productivity & Continuous Improvement (AM) Future of Work (PM) - Day 2

## Lean, Productivity & Continuous Improvement (AM)

| Times       | Name   | Topic  |
|-------------|--|--|
| 9.55-10.00  | Allyson English  | Opening Remarks  |
| 10.00-10.20 | Sophie Deans   | Twin transition - digital & sustainability   |
| 10.20-11.00 | Panel discussion on sustainability   | TBC  |
| 11.00-11.40 | <b>Moderator:</b> Paul Cosgrove<br>Ashley Bell; John McLoughlin; TBC: Kuka (Brian Cooney, MD). | Panel discussion: “Bytes and Bolts: Integrating Software, Robotics, and AI in Manufacturing” |
| 11.40-12.00 | Liz Carroll, Interim Learning and Development Director,<br>Irish Manufacturing Research        | Putting People First   |
| 12.00-12.30 | <b>LUNCH &amp; NETWORKING</b>  |  |

## Future of Work (PM)

|             |   |  |
|-------------|---|--|
| 12.30-12.50 | Louise O’Gorman, Advance Centre Manager, ATU  | Engineering Education 5.0: A New Model for the Future of Manufacturing   |
| 12.50-13.10 | Rabia Mirza, CEO, Leadership & HR Solutions   | Empowered Women: Expedite Your Career in Male-dominated Industries   |
| 13.10-13.30 | Feena Kirrkamm, Sustainability Advisor, BITCI   | The supply chain of the future – how to prepare for the environmental and social dimensions and build a resilient business |
| 13.30-13.50 | Dr. Joan Cahill, Occupational Health, Health and Safety Authority                     | Protecting Vulnerable Workers  |
| 13.50-14.10 | Darragh Gaffney, Research & Innovation Manager, Industry Research & Development Group | How to leverage the RD&I Eco-system in Ireland; grants, tax credits and collaboration to impact your bottom line           |
| 14.10-14.30 | TBC   | TBC  |
| 14.30-14.35 | TBC   | Closing Remarks  |



LEAN, PRODUCTIVITY & CONTINUOUS IMPROVEMENT



FUTURE OF WORK



All presentations/timetables are subject to change. Please check with onsite event timetable on the day.

Full exhibitor profiles available on the website [www.manufacturingevent.com](http://www.manufacturingevent.com) | Full speaker profiles available on the website [www.manufacturingevent.com](http://www.manufacturingevent.com)

The background image shows a close-up of a KUKA LBR iisy robot arm. The arm is white and grey, with a black cable running along its side. In the foreground, a black smartPAD pro pendant is visible, featuring a small screen and several buttons. Below the pendant is a terminal block with numerous white connectors. The overall scene is brightly lit, with a soft glow around the robot arm.

## An iisy to use robot:

versatile, intuitive & reliable

LBR iisy is a robot for all occasions

LBR iisy - a combination of industrial automation know-how, with the flexibility and simplicity of an intelligent tool, coupled with the speed of a traditional industrial robot: Set it up, switch it on, get started **\_It's iisy**

Ready for use in just a few minutes, the LBR iisy easy to use robot stands out due to its intuitive operating features, which ensure that it can be put to use quickly and productively without any prior robot programming knowledge, thanks to the iiQKA.OS operating system, making it iisy to install, configure and program.

Thanks to the smart teach pendant smartPAD pro, any additional programming tasks are as iisy as using a smartphone!

KUKA Robotics Ireland Ltd.  
T: 042 9395034  
E: sales.ie@kuka.com

# IoT & Industry 4.0 - Day 1

## IoT & Industry 4.0 - Day 1

| Times       | Name  | Topic   |
|-------------|---|---|
| 9.55-10.00  | ISA - Delan Lordon  | Opening Remarks   |
| 10.00-10.20 | Amazon TBC  | TBC   |
| 10.20-10.40 | Kathryn Cormican, Professor of Systems Engineering, University of Galway  | Designing Futures: Pathways to Industry 5:0   |
| 10.40-11.00 | Gael Beaulieu, Senior Smart Industry Advisor, Certified SIRI Assessor, Irish Manufacturing Research                             | Time: Smart Industry Readiness Index (SIRI) and your Digital Transformation Journey                         |
| 11.00-11.20 | Patrick Lynn, Senior Manager in the Advisory Practice, PwC Ireland  | PwC 2024 Global Digital Procurement Survey Findings   |
| 11.20-11.40 | Dr. Eric Topham, Co-Founder & CEO, OctaiPipe  | Intelligent Automation: Scaling the Manufacturing Sector through Trusted AI.                                |
| 11.40-12.00 | TBC, Irish Manufacturing Research   | TBC   |
| 12.00-12.20 | Roman Zhukov, Product Security Manager, Intel   | Protecting Manufacturing in the Era of Emerging AI  |
| 12.20-13.00 | <b>Moderator:</b> Delan Lordon<br><b>Panellists:</b> TBC  | TBC   |
| 13.00-13.20 | <b>LUNCH &amp; NETWORKING</b>   |   |
| 13.20-13.40 | Toni Byrd Ressaire, Director of Innovation, TWi (Technically Write IT)  | Intelligent Content: Empowering Industry 5.0 Transformation in Manufacturing                                |
| 13.40-14.00 | Rob Webb, Product Sales Specialist, IDS Imaging Development Systems Ltd.  | Designing, Building and Deploying Machine Vision Systems using Deep Learning                                |
| 14.00-14.20 | Mark Elwell, Head of Sales, KUKA Ireland  | KUKA : More Than Robots   |
| 14.20-14.40 | Dr Sarath Menon, Lecturer, Greater Manchester Business School & Professor Kumud Wijayaratra, Lecturer, The University of Bolton | Challenges & Opportunities – Bridging the knowledge gap with innovative strategies to shape smart factories |
| 14.40-15.00 | Lee Bristow, CTO, Phinity Risk Solutions  | TBC   |
| 15.00-15.20 | Mark O'Donovan, CEO & Founder, Carlisle Engineering Solutions   | Bootstrap to Breakthrough: Digital Transformation Strategies for the Small Manufacturing Revolution         |
| 15.20-15.25 | TBC   | Closing Remarks   |

## IOT & INDUSTRY 4.0



All presentations/timetables are subject to change. Please check with onsite event timetable on the day.

Full exhibitor profiles available on the website [www.manufacturingevent.com](http://www.manufacturingevent.com) | Full speaker profiles available on the website [www.manufacturingevent.com](http://www.manufacturingevent.com)

# National Manufacturing & Supply Chain Conference



Come visit the EY stand (Stand H15) and talk to our team.

## Services Includes:

Manufacturing Operational Excellence | Manufacturing Strategy & Footprint Optimization | Manufacturing Asset Management & Reliability | Digital Strategy, Roadmap & Implementation | Industry 4.0, Shopfloor Systems & Automation



# Multimodal Logistics

Delivered with Local Expertise

SEE US AT STAND J10



Save up to 60% on CO<sub>2</sub>

[ewals.com](http://ewals.com)

We care, connect, move

# Supply Chain & Logistics - Day 2

## Supply Chain & Logistics - Day 2

| Times       | Name  | Topic   |
|-------------|---|---|
| 9.55-10.00  | Pat Daly, Director, Alba Logistics  | Opening Remarks   |
| 10.00-10.20 | Desmond O'Sullivan, VP Business Development EMEA, Optel Group   | The Future of Supply Chains   |
| 10.20-11.00 | <b>Moderator:</b> Simon McKeever, CEO, Irish Exporters Association<br><b>Panellists:</b> Mark Cosgrove, Regional Sales & Commercial Manager UK & Ireland, DACHSER | Supply Chain Resilience in Times of Disruption: Lessons Learned and Strategies for the Future |
| 11.00-11.20 | Rachel Morrison, Head of Product Regulation Engagement, UK government's Department for Business and Trade   | UK's Approach to Product Regulation – UKCA & CE marking                                       |
| 11.20-11.40 | Michael Boyd, Managing Director, International Trade Institute & Brendan McAuley, Executive Director, International Trade Institute                               | Changes in international trade and what they will mean for your supply chain                  |
| 11.40-12.00 | Charlie Dawson, Business Development Manager, Customs Support Ireland   | Unlocking Borders: the Key to Efficient Customs Clearance                                     |
| 12.00-12.20 | David Beck, RGIS  | TBC   |
| 12.20-12.30 | <b>LUNCH &amp; NETWORKING</b>   |   |
| 12.30-13.00 | <b>Fireside Chat</b><br>Pat Daly, Director, Alba Logistics & TBC  | TBC   |
| 13.00-13.20 | Adam Fox, Ireland & UK Business Development Manager, Swisslog   | Conquering Supply Chain Challenges with Warehouse Automation                                  |
| 13.20-13.40 | Sevil Bozdogan, MSc. Supply Chain Management, Dublin Business School  | Supply Chain Management of Sustainable Solutions and Existing Problem                         |
| 13.40-14.00 | Nigel Irvine, Founder & Managing Director. Specialist Export Solutions Ltd  | Export sales growth – performance managing the Sales network                                  |
| 14.00-14.20 | Carlos Villafane, Country Manager - UK & Ireland, ProGlove  | Hands-free barcode scanning to empower a smarter workforce                                    |
| 14.20-14.40 | Mark Cosgrove, Regional Sales & Commercial Manager UK & Ireland, DACHSER  | @ILO – DACHSER Future Terminal  |
| 14.40-14.45 | Pat Daly, Director, Alba Logistics  | Closing Remarks   |

## SUPPLY CHAIN & LOGISTICS



All presentations/timetables are subject to change. Please check with onsite event timetable on the day.

Full exhibitor profiles available on the website [www.manufacturingevent.com](http://www.manufacturingevent.com) | Full speaker profiles available on the website [www.manufacturingevent.com](http://www.manufacturingevent.com)



# Engineering A Better Future - Presented by IBEC - Day 1

## Engineering A Better Future - Presented by IBEC - Day 1

| Times       | Name  | Topic   |
|-------------|---|---|
| 9.55-10.00  | Shane Beirne, Senior Executive, Engineering Industries Ireland                            | Opening Remarks   |
| 10.00-10.20 | Pauline O'Flanagan, Director, Engineering Industries Ireland                              | Ireland as a Global Engineering Centre of Excellence  |
| 10.20-10.40 | Ann Fitzpatrick, Engineering Dept. Manager, Enterprise Ireland                            | Enterprise Ireland supports for Engineering companies   |
| 10.40-11.00 | Hazel Ahern, Senior Economist, Ibec   | Economic Update   |
| 11.00-11.40 | <b>COFFEE BREAK &amp; NETWORKING</b>  |   |
| 11.40-12.00 | Shane Beirne, Senior Executive, Engineering Industries Ireland                            | Navigating the Engineering Sectors Regulatory Landscape   |
| 12.00-12.40 | Barry Cox, Standard Advisor, NSAI   | Update on the Machinery Regulation and CE Marking   |
| 12.40-13.00 | Conor Minogue, Senior Executive, Infrastructure, Energy and Environment, Ibec             | Understanding the Carbon Border Adjustment Mechanism (CBAM)                                       |
| 13.00-14.00 | <b>LUNCH &amp; NETWORKING</b>   |   |
| 14.00-14.20 | Keith Whiriskey, Senior Advisor, Sustainability, Enterprise Ireland                       | Making your business more sustainable   |
| 14.20-14.40 | Ann O'Connell, Head of Funded Projects, Irish Medtech Skillnet                            | Accelerate Manufacturing Excellence with MÓR: Principles Processes and Tools                      |
| 14.40-15.00 | Trish Breen, Manufacturing Engineering & Polymer Processing Apprenticeships Manager, Ibec | Grow your talent pipeline with the Manufacturing Engineering & Polymer Processing Apprenticeships |
| 15.00-15.20 | Fiona Fennell, Network Manager, Engineering Skillnet                                      | How critical thinking can boost well-being for human-centric industries                           |
| 15.20-15.25 | TBC   | Closing Remarks   |

NATIONAL  
**MANUFACTURING  
& SUPPLY CHAIN**  
CONFERENCE & EXHIBITION



In Partnership With



**Engineering  
Industries Ireland**  
ibec

**ENGINEERING A  
BETTER FUTURE**



**Engineering  
Industries Ireland**  
ibec



**KUKA**  
**SWISSLOG**



ifm electronic



**WINSOURCE**  
ELECTRONICS

**DNA** IT SOLUTIONS



All presentations/timetables are subject to change. Please check with onsite event timetable on the day.

Full exhibitor profiles available on the website [www.manufacturingevent.com](http://www.manufacturingevent.com) | Full speaker profiles available on the website [www.manufacturingevent.com](http://www.manufacturingevent.com)



[www.manufacturingevent.com](http://www.manufacturingevent.com)



@NationalMSC #ManufacturingExpolRE




Manufacturing & Supply Chain Conference & Exhibition

# Robotics & Automation - Day 2

## Robotics & Automation - Day 2

| Times       | Name   | Topic   |
|-------------|--|---|
| 9.55-10.00  | TBC  | Opening Remarks   |
| 10.00-10.20 | TBC  | Current Trends in International Standards Supporting Leading Research in Collaborative Robotics     |
| 10.20-10.40 | Kenny Watson, Automation Manager, Linde Robotics   | Automation - Can You Afford Not To?   |
| 10.40-11.00 | Iria Galiñanes Romero, Smart Manufacturing Leader, CTAG  | Innovation and Technology for the Future of Industry  |
| 11.00-11.20 | Vanessa Loiola, Founder & Owner, Valoy Automation  | Enhancing Robotic Cell Performance with Strategic Programming Solutions                             |
| 11.20-11.50 | <b>Fireside Chat:</b><br>Adam Fox, Ireland & UK Business Development Manager, Swisslog & Brian Cooney, Managing Director, KUKA Ireland"                | What is Possible in the Realm of Autonomous Systems? The Answer? Anything...                        |
| 11.50-12.30 | <b>LUNCH &amp; NETWORKING</b>  |   |
| 12.30-12.50 | TBC  | TBC   |
| 12.50-13.10 | Michael Guilfoyle, Services & Support Manager, Pilz Ireland  | The New Machinery Regulation - Self Evolving Machinery and Industrial Security                      |
| 13.10-13.50 | <b>Moderator:</b> ASK:<br><b>Panellists:</b> LINDE TBC, Victor Alonso Ramos, Deputy Director, CTAG & Vanessa Loiola, Founder & Owner, Valoy Automation | Innovations in Robotics and Automation: Impact on Irish Manufacturing                               |
| 13.50-14.10 | Gregg Collett, Industrial Account Manager UK & IRE, CHG-MERIDIAN UK  | Navigating the Warehouse Technology Landscape: Innovative Funding Solutions for Automation Projects |
| 14.10-14.30 | Matthew Aldridge, Manager, igus  | RBTX; get started with low cost automation  |
| 14.30-14.35 | TBC  | Closing Remarks   |

## AUTOMATION & ROBOTICS




All presentations/timetables are subject to change. Please check with onsite event timetable on the day.

Full exhibitor profiles available on the website [www.manufacturingevent.com](http://www.manufacturingevent.com) | Full speaker profiles available on the website [www.manufacturingevent.com](http://www.manufacturingevent.com)

# Sustainability & Plastics & Waste Management - Day 1

## The Sustainability Summit & Plastics & Waste Management Event - Day 1

| Times       | Name   | Topic  |
|-------------|--|--|
| 9.55-10.00  | Paul O'Doherty, journalist and broadcaster   | Opening Remarks  |
| 10.00-10.20 | Prem Kumar, Global Supply Chain and Sustainability Solutions Leader, IBM Consulting  | The Future of ESG Data   |
| 10.20-10.40 | Dr. Catherine McIntyre, Water Technologist, Irish Manufacturing Research   | Digital Water: Coca-Cola and IMR Journey in Sustainability   |
| 10.40-11.00 | Duncan Flack, Chairman & Global Sustainability Lead, CiPPPA & Honeywell  | Making the Sustainable Attainable  |
| 11.00-11.20 | Axel Schnuetgen, Managing Director, SpaceF.foundation GmHB   | A recipe for Digital Transformation  |
| 11.20-11.40 | Mark McKeever, Director, PwC   | Findings from a Global PwC ESG Operations Survey   |
| 11.40-12.00 | Anne Bannon, Head of Healthcare and Life Sciences Sector, AIB  | Supporting the decarbonisation of the Irish Manufacturing Sector   |
| 12.00-12.40 | <b>Moderator:</b> The Core Story<br><b>Panellists:</b> TBC   | PANEL CORE STORY   |
| 12.40-13.00 | <b>COFFEE BREAK &amp; NETWORKING</b>   |  |
| 13.00-13.20 | Ray O'Mahony, Technical Manager, Symetri Europe  | Sustainability in Manufacturing  |
| 13.20-13.40 | Dr. Geraldine Brennan, Head of Circular Economy, Irish Manufacturing Research - CIRCULÉIRE   | Transforming Business Models towards Circularity   |
| 13.40-14.00 | Lynne Connolly, Managing Director, NJB Packaging   | A new solution needed for a new problem: Where has the value gone in Plastic Packaging?  |
| 14.00-14.20 | Cathal Fitzgerald, Director, Agrina Fuels Limited  | A real-life transition story from fossil fuel to one of the largest biochar producers in the world   |
| 14.20-14.40 | Natasha Rahman, Group Marketing Manager, Snap  | "The Power of Eco-Friendly Choices: Enhancing Brand Image and Reducing Environmental Impact"   |
| 14.40-15.20 | <b>Moderator:</b> Ashley Shak, Head of Sustainability & Programmes, Dogpatch Labs<br><b>Panellists:</b> Geraldine Moloney, Head of New Business Ventures, ESB, Angie Nagle, Founder & CEO, Bladebridge | Building Sustainable Startups<br>Summary: The 2050 Accelerator gives startups the opportunity to access top expertise in a proven accelerator model. The 2050 Ecosystem connects industry, government, academia, and startups to help solve the nation's sustainability challenges - together. |
| 15.20-15.25 | TBC  | Closing remarks  |



All presentations/timetables are subject to change. Please check with onsite event timetable on the day.

Full exhibitor profiles available on the website [www.manufacturingevent.com](http://www.manufacturingevent.com) | Full speaker profiles available on the website [www.manufacturingevent.com](http://www.manufacturingevent.com)

# Renewable Energy & Climate Tech - Day 2

## The Renewable Energy Event & Climate Tech Event - Day 2

| Times       | Name   | Topic  |
|-------------|--|--|
| 9.55-10.00  | TBC  | Opening Remarks  |
| 10.00-10.20 | Alex Ruffle, UK & Ireland Country Manager, Ewals Cargo Care UK & Ireland   | Reducing Carbon Emissions with Increased Multimodality   |
| 10.20-10.40 | Jonathan Diver, Director Fuel, Circle K Ireland  | Circle K - Fuelling the future of Ireland  |
| 10.40-11.00 | Davide Salesi, Head of Sales, Ortea Spa  | Power quality and energy efficiency for industrial automation processes  |
| 11.00-11.20 | John Liston, Sales manger UK & Ireland, Enerpower  | Empowering Tomorrow: Exploring Distributed Generation, Renewable Energy PPA and the Ground-breaking District Heating Project |
| 11.20-11.40 | Ben Churchill, Chief Strategy Officer, CoolPlanet  | Decarbonisation at Scale   |
| 11.40-12.00 | Diana Vaz, Renewable Research Technologist, Irish Manufacturing Research   | The Role of RES in the Decarbonisation of Industry + The Green Book  |
| 12.00-12.30 | <b>LUNCH BREAK &amp; NETWORKING</b>  |  |
| 12.30-12.50 | Pádraig Power, Senior Marketing Manager: Global Operations and Ireland, refurbished.ie   | Reducing Costs, Increasing Transparency: The Role of Refurbished Technology in ESG Strategies                                |
| 12.50-13.10 | Ruth Kearney, CEO, Nightingale HQ  | Sustainable Serverless Computing for Manufacturers   |
| 13.10-13.50 | <b>Moderator:</b> Francis O' Haire, CTO, Data Solutions & Sustainable Technology Ambassador, Techies Go Green<br><b>Panellists:</b> Paul McSweeney, Founder and CEO, The Zero Net Mike Townsend, CEO, Earthshine Group, Dr Geraldine Brennan, Head of Circular Economy, Irish Manufacturing Research | Why is the Circular Economy so slow in taking off?   |
| 13.50-14.10 | Colm Hatton, Business Development Manager, Balcas Energy   | How Wood Pellet Powder Burner Technology can help large heat users to decarbonise.   |
| 14.10-14.30 | John O'Shea, Senior Energy Systems Analyst / Heat & Electricity Lead, Codema   | Sector Integration - Supporting Climate Targets & A Poolbeg Area Energy Modelling Case Study                                 |
| 14.30-14.35 | TBC  | Closing Remarks  |

## RENEWABLE ENERGY CLIMATE TECH



ifm electronic



All presentations/timetables are subject to change. Please check with onsite event timetable on the day.

Full exhibitor profiles available on the website [www.manufacturingevent.com](http://www.manufacturingevent.com) | Full speaker profiles available on the website [www.manufacturingevent.com](http://www.manufacturingevent.com)



[www.manufacturingevent.com](http://www.manufacturingevent.com)



@NationalMSC #ManufacturingExpoIRE



Manufacturing & Supply Chain Conference & Exhibition

## Pharmaceuticals & Life Sciences - Day 1

| Times       | Name  | Topic   |
|-------------|---|---|
| 9.55-10.00  | Matt Moran, Consultant, Pharmaceuticals & Life Sciences   | Opening Remarks   |
| 10.00-10.20 | Sinead Keogh, Director, BiopharmaChem Ireland   | TBC   |
| 10.20-11.00 | Alan Kennedy, Executive Director, GDP-UCI   | Driving Global Excellence in Pharmaceutical Distribution: The GDP-Universal Compliance Initiative (GDP-UCI) |
| 11.00-11.10 | <b>COFFEE BREAK &amp; NETWORKING</b>  |   |
| 11.10-11.40 | <b>Fireside Chat:</b><br>Martin Lush, Former Vice President Of Global Services, NSF International & Matt Moran, Consultant - Life Sciences and Pharmaceuticals and Previous Director, BiopharmaChem Ireland<br>Damian Costello, Head of Life Sciences & Technology – Expleo Group | Want to Thrive? - Train for Certainty – Educate for Uncertainty   |
| 11.40-12.00 | Christopher Ryan, Director - Operational Excellence Lead at EY Ireland & Gary O'Callaghan, Director, EY Ireland   | Led by Lean, Sustained by Digital – Lessons Learned in our Manufacturing Transformation Team                |
| 12.00-12.20 | Mark Crosbie, Director, Pro-Reliability Solutions Ltd   | Sustainable Reliability – Just got Serious!   |
| 12.20-12.40 | Marie O'Callaghan, Senior Consultant - Pharma Biotech, NSF  | What To Expect from A Regulatory Inspection   |
| 12.40-13.00 | Dennis Blanck, Head of Sales and Marketing, Westbourne IT Global Services   | Digital Transformation in the Pharma Lab - Where to start and how to navigate the pitfalls                  |
| 13.00-13.30 | <b>LUNCH &amp; NETWORKING</b>   |   |
| 13.30-14.00 | Martin Lush, Former Vice President Of Global Services, NSF International  | Artificial Intelligence in a G x P Environment and its impact on YOU. How to stay relevant in the AI world  |
| 14.00-14.20 | Shane Fitzpatrick, BioPharma Practice Lead, Expleo Group  | TBC   |
| 14.20-14.40 | Lee Sherlock, CEO & Co-Founder, Meta-Flux   | AI and its Applications to Drug R&D   |
| 14.40-15.20 | <b>Moderator:</b> Matt Moran, Consultant, Pharmaceuticals & Life Sciences<br><b>Panellists:</b> Shay Weiss, Director of Engineering & Product Portfolio, WBA Technology Center, Martin Lush, Former Vice President Of Global Services, NSF International, Natasha Gupta,          | Future of Healthcare Delivery: Integrating Pharmaceuticals and Technology                                   |
| 15.20-15.25 | Matt Moran, Consultant, Pharmaceuticals & Life Sciences   | Closing Remarks   |



**WESTBOURNE**  
Global IT Solutions

All presentations/timetables are subject to change. Please check with onsite event timetable on the day.

Full exhibitor profiles available on the website [www.manufacturingevent.com](http://www.manufacturingevent.com) | Full speaker profiles available on the website [www.manufacturingevent.com](http://www.manufacturingevent.com)



[www.pharmaandmedtech.com](http://www.pharmaandmedtech.com)



@NationalMSC #ManufacturingExpolRE



Manufacturing & Supply Chain Conference & Exhibition

## Pharmaceuticals & Life Sciences - Day 2

| Times       | Name  | Topic   |
|-------------|---|---|
| 9.55-10.00  | TBC   | Opening Remarks   |
| 10.00-10.20 | Michael Clarke, Partnerships Director, British Generic Manufacturers Association  | Sustainability in the Generic Pharmaceutical Industry: Challenges and Opportunities   |
| 10.20-10.40 | Jeffrey Whitford, Vice President of Sustainability & Social Business Innovation, Merck  | Creating Differentiation through Sustainability Innovation  |
| 10.40-11.00 | Alan Kelly, Subject Matter Expert (Aseptic Fill Finish), PM Group   | Main sources of contamination in your life science facility – how to identify the source, mitigate the risk and improve your companies Quality System |
| 11.00-11.20 | Damien Munroe, Managing Director, Control Station Ltd   | Sustainable Pharmaceutical manufacturing: Modeling and optimisation approaches to PID-controlled processes and systems                                |
| 11.20-12.00 | <b>Moderator:</b> Matt Moran, Consultant, Pharmaceuticals & Life Sciences<br>Sean Coombs, MedTech Technical Director, PM Group & Niamh Bissett, Director, Operations, PMO, West Pharmaceutical Services<br>Alan Kelly, Subject Matter Expert (Aseptic Fill Finish), PM Group" | How Ready Are You? Annex 1 and Impact on Primary Packaging  |
| 12.00-12.20 | Nicola Rice, Mechanical Engineer & Head of Programmes, Innopharma Labs  | Manufacturing Resilience: The Key to Thriving Amid Labour Shortages and Digital Transformation in the Pharma & MedTech Sectors                        |
| 12.20-12.30 | <b>LUNCH &amp; NETWORKING</b>   |   |
| 12.30-13.00 | <b>Fireside Chat:</b><br>Duncan Flack, Chairman & Global Sustainability Lead, CiPPPA & Honeywell & Dr Geraldine Brennan, Head of Circular Economy, Irish Manufacturing Research   | Closing the Loop: Advancing Sustainability in Pharmaceutical Packaging  |
| 13.00-13.20 | Dean Murray, Market Research Lead, Envetec Sustainable Technologies   | Rethinking Waste in Life Science: From Waste to Resource  |
| 13.20-13.40 | Liam Burke Masterson, Business Development Manager, Skycell   | Transforming Pharma Supply Chains: Innovating and Evolving for Enhanced Resilience and CO2 Reduction  |
| 13.40-14.00 | Brian Dillon & Dr Evin Allen, Industry Liaison Officer, iEd Hub UCC & Lecturer in Industrial Pharmacy, UCC  | Reducing the time to competency of new graduates in the Life Sciences Industry  |
| 14.00-14.20 | Simon Brough, Head Of Business Development, PharmiWeb   | The future of talent acquisition in Pharma and life sciences  |
| 14.30-14.35 | TBC   | Closing Remarks   |



**WESTBOURNE**  
Global IT Solutions

All presentations/timetables are subject to change. Please check with onsite event timetable on the day.

Full exhibitor profiles available on the website [www.manufacturingevent.com](http://www.manufacturingevent.com) | Full speaker profiles available on the website [www.manufacturingevent.com](http://www.manufacturingevent.com)



[www.pharmaandmedtech.com](http://www.pharmaandmedtech.com)



@NationalMSC #ManufacturingExpoIRE



Manufacturing & Supply Chain Conference & Exhibition

## MedTech & BioTech - Day 1

| Times       | Name  | Topic   |
|-------------|---|---|
| 9.55-10.00  | TBC   | Opening Remarks   |
| 10.00-10.20 | Eoghan Ó Faoláin, Director of Irish Medtech Association, IBEC                                     | TBC   |
| 10.20-10.40 | TBCs  | TBC   |
| 10.40-11.00 | Lisa Donlon, Principal Business Consultant - Regulatory Affairs Specialist, Expleo Group          | Technical documentation changes for the upcoming AI act   |
| 11.00-11.20 | <b>COFFEE BREAK &amp; NETWORKING</b>  |   |
| 11.20-11.40 | Adrian Kelly, Sales and Marketing Director, DNAIT   | Using AI to Optimise the Performance of Your Applications and Infrastructure                    |
| 11.40-12.00 | TBC   | TBC   |
| 12.00-12.20 | Seamus Crickley, WEW  | TBC   |
| 12.20-12.40 | Pat McGuire, Director of Expleo Academy International, Expleo                                     | 'Skills' Gaps in 2024. Does Leadership Suffer?  |
| 12.40-13.20 | <b>LUNCH &amp; NETWORKING</b>   |   |
| 13.20-13.40 | Eimear, Forde, Wu-Xi TBC  | TBC   |
| 13.40-14.00 | Doyin Bademosi, CEO, Radmol AI Systems  | Empowering Health Equity through AI   |
| 14.00-14.20 | Sandeep Khuperkar, Founder & CEO, Data Science Wizards  | Accelerating AI Adoption in MedTech and Pharma - UnifyAI Driving the Innovation                 |
| 14.20-14.40 | Ken Jackson, Sales Director, Modern Plant & Ralph Brekelmans, Sales Manager Europe North, Haws AG | Safety Shower Solutions in the Medtech & Pharma sectors – Regulatory Compliance & Best Practice |
| 14.40-15.00 | JB Dobbin, Design Director & Founder, Demanu  | Road to the Red Dot Design  |
| 15.00-15.20 | TBC   | TBC   |
| 15.20-15.25 | TBC   | Closing Remarks   |



**WESTBOURNE**  
Global IT Solutions

All presentations/timetables are subject to change. Please check with onsite event timetable on the day.

Full exhibitor profiles available on the website [www.manufacturingevent.com](http://www.manufacturingevent.com) | Full speaker profiles available on the website [www.manufacturingevent.com](http://www.manufacturingevent.com)



[www.pharmaandmedtech.com](http://www.pharmaandmedtech.com)



@NationalMSC #ManufacturingExpolRE



Manufacturing & Supply Chain Conference & Exhibition

## MedTech & BioTech - Day 2

| Times       | Name  | Topic   |
|-------------|---|---|
| 9.55-10.00  | TBC   | Opening Remarks   |
| 10.00-10.20 | Adrian Kelly, Sales and Marketing Director, DNAIT<br>Robert Kelly, CEO, Hearth Rhythm Ireland   | IBM Cloud technology to build their MedTech startup, from the beginning to international growth |
| 10.20-10.40 | JP Kelly, Associate Director, Cork Murphy Geospatial  | Geospatial Management for Complex Manufacturing facilities                                      |
| 10.40-11.00 | Richard Linger, CEO, PV Generation  | Emerging opportunities for Renewables and Battery Storage in Ireland                            |
| 11.00-11.30 | Dr. Geraldine Brennan Circulaire & TBC  | Fireside Chat - On the Circular Economy   |
| 11.30-11.50 | Ken Jackson, Sales Director, Modern Plant & Ralph Brekelmans, Sales Manager Europe North, Haws AG   | Safety Shower Solutions in the Medtech & Pharma sectors – Regulatory Compliance & Best Practice |
| 11.50-12.30 | <b>LUNCH &amp; NETWORKING</b>   |   |
| 12.30-13.10 | <b>Moderator:</b> TBC<br><b>Panellists:</b> Jeffrey Whitford, Vice President of Sustainability & Social Business Innovation, Merck, Damien Munroe, Managing Director, Control Station Ltd | Prescribing Sustainability: Sustainable Manufacturing Solutions in Medtech & Biotech            |
| 13.10-13.30 | Ryan Magee, Vice President of Engineering, Beyond Cancer  | Lifecycle Management: From design requirements to clinical and complaint follow-up              |
| 13.30-13.50 | Philip Kemp, President & COO, X-Bolt Orthopedics  | Shaping the journey to commercialization  |
| 13.50-14.10 | Niamh Nolan, Principal Consultant MedTech, Expleo Group   | Ensuring Quality Management System integrity amid Digital Transformation                        |
| 14.10-14.30 | Rohit Thakral, CEO, Target Integration  | Microsoft BI For Manufacturers: Real-Time Data For Better Decision Making                       |
| 14.30-14.35 | TBC   | Closing Remarks   |



**WESTBOURNE**  
Global IT Solutions

All presentations/timetables are subject to change. Please check with onsite event timetable on the day.

Full exhibitor profiles available on the website [www.manufacturingevent.com](http://www.manufacturingevent.com) | Full speaker profiles available on the website [www.manufacturingevent.com](http://www.manufacturingevent.com)



[www.pharmaandmedtech.com](http://www.pharmaandmedtech.com)



@NationalMSC #ManufacturingExpolRE



Manufacturing & Supply Chain Conference & Exhibition





## EXTERNAL EXHIBITORS

**1** TESLA

**2** IFM

**3** CIRCLE K

Entrance



**4** LINDE

**8** RDS SIMMONSCOURT HALL



# FOOD & BEVERAGE MANUFACTURING EXPO

in association with

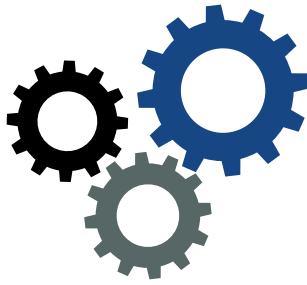


IRISH  
MANUFACTURING  
RESEARCH

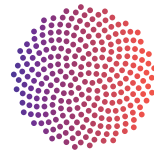
Mullingar Park Hotel, Dublin Rd, Marlinstown,  
Mullingar, Co. Westmeath, October 3<sup>rd</sup> 2024  
Register now at  [www.fooddrinkevent.com](http://www.fooddrinkevent.com)

Contact Colin at [colin@prempub.ie](mailto:colin@prempub.ie) or on 01 6120880 for more information

# NATIONAL MANUFACTURING & SUPPLY CHAIN CONFERENCE & EXHIBITION



In Partnership With



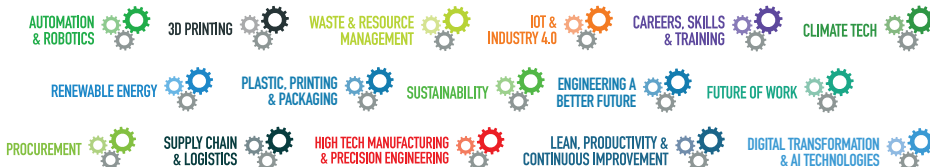
## Engineering Industries Ireland

Ibec

### FLOOR PLAN



ifm electronic



**Manufacturing & Supply Chain Conference & Exhibition Index**

**Pharma & Medtech Expo Index**

|  |      |   |          |   |      |   |     |
|--|------|---|----------|---|------|---|-----|
| .IE  | A23  | GBM Limerick                                    | B01      | RTR Electronics                           | C06  | ACCPRO                                      | Z19 |
| 123ink.ie  | R07  | GEJU  | P03      | Schubert UK Limited                       | O08  | Air Products                                | X10 |
| 3D Technology  | H10  | GEV Technologies                                | E05      | Secora Consulting                         | L19  | Anton Paar Ireland Ltd                      | Y32 |
| Aaron PCB  | B06A | Globus Metal Powders                            | J05      | SETU                                      | K14  | APC & VLE Therapeutics Ltd                  | Z22 |
| Access Plastics                                      | L12  | GRENKE  | P13      | Sharp Group - Raising the bar             | L08  | Apleona Ireland limited                     | X13 |
| acre   | B11  | Griffith College                                | U12A     | Snap Ireland                              | R09A | Aquilant Scientific                         | Z20 |
| Advanced Centre for Professional Education           | L10  | Guhring Limited                                 | I01      | Snickers Workwear                         | N05  | ARRK Europe Ltd                             | Y23 |
| Advanced Dynamics                                    | G01A | Hallgruppen                                     | O03      | Solid Solutions                           | I02  | Astoriom                                    | Y21 |
| Advanced Manufacturing Training Centre of Excellence | U08  | Hanley Automation Networks Limited              | D03      | Solsta                                    | F13  | BioPharma Expo 2025                         | X01 |
| AIS Ltd  | B04  | Health & Safety Authority                       | E06      | Sonoco Thermosafe                         | R11  | BioPharmaChem Skillnet                      | X11 |
| Albatel  | L11  | Heavy Technology                                | B01A     | Sperrin Metal Storage Solutions           | J06  | Collins Plastics                            | X03 |
| Alltrans part of Carousel Logistics                  | T09  | HellermannTyton                                 | F10      | Start Solar                               | E23  | Deep Digital Solutions Group                | Z17 |
| Alpha Sign   | D09  | Henry R Ayton                                   | B01B     | Starteam Global                           | D05  | Derrycourt Cleaning Specialists             | Y13 |
| AP Controls Limited                                  | G06  | Herbst Software                                 | I07      | Steplift                                  | L04A | Dixon International Logistics               | Y24 |
| AP Haslam Limited                                    | G11  | Howden  | B11A     | Stocktaking.ie powered by RGIS            | J14  | DNA IT                                      | Y02 |
| Ash  | K01A | HowToRobot                                      | F11      | SVL                                       | V16A | Dog Day Media                               | X09 |
| Atlas Copco  | G01B | Hub Packaging                                   | L16      | Symetri Europe                            | J07  | Ellab                                       | X35 |
| Autoprint Labelling Systems                          | T06  | Hybrid TP                                       | A10      | Takumi Precision                          | K10  | Endress+Hauser                              | Y37 |
| Autostore System Ltd                                 | V05  | I-Form Advanced Manufacturing Research Centre   | B03      | Tangent                                   | P07  | Enhanced Information Solutions (EIS)        | Y25 |
| AWS  | V05A | IDS Imaging Development Systems                 | I06      | Target Integration                        | D01A | Expleo                                      | X16 |
| Balcas Energy  | E11  | IFM   | T01      | Techies Go Green                          | A22  | Fike  | Z04 |
| Bear Robotics  | D02A | IFS Ultimo                                      | G09      | Technically Write IT                      | E16  | Force Recruitment                           | X20 |
| Better Futures AI                                    | D11A | Ille Service Ltd                                | C04A     | Tejas Software                            | L10A | HaPPE Earth                                 | W07 |
| Big Red Cloud Turbo Inventory                        | D07  | Impact Ireland (Metals) Ltd                     | H03      | Teng Tools                                | G03A | Helio Gas Detection                         | Y07 |
| BITO Logistics Solutions Ltd                         | C09  | Inspire 3D                                      | L01/N01A | TESLA                                     | A01B | Hellmann Worldwide Logistics                | X06 |
| Bonner   | O07  | InterTradelreland                               | L04      | Texam/ENE Conveyor Belting                | V12  | I-care                                      | X14 |
| Bord na Móna   | H10B | IPL Group                                       | N09      | Text Tell Ltd                             | W03  | La Tene Maps                                | X05 |
| Bosta  | E07  | IQUTECH   | B06      | Thame Workholding                         | V11  | Lennox                                      | Y31 |
| BOWE INTRALOGISTICS                                  | F03  | Irish Exporters Association                     | E24      | The Core Story                            | D11  | Marchesini Group                            | P10 |
| Butler Technologies                                  | H13  | Irish Manufacturing Research                    | E01A     | The Cup Collective                        | A18  | McBreen Environmental & EDAC                | Y26 |
| Caldor Solar   | K08  | Irish Social Enterprise Network                 | L05      | The Momentum Group                        | G04  | MEA   | Y33 |
| Canon  | E04  | IWT   | H09A     | The Sempre Group Ltd                      | S01A | Modern Plant Ltd                            | X17 |
| Carten Controls                                      | N02  | Jigsaw Better Business                          | E22      | Thorntons Recycling                       | E10  | NextPharma                                  | Y20 |
| Chemical & Process Division of Engineers Ireland     | E16B | JMC Project Services Ltd.                       | P13A     | Timeless Marketing                        | E12  | NSF   | Y19 |
| Circle K   | U05  | Jungheinrich                                    | H02      | Timeworks                                 | M06  | OBW Technologies                            | Y22 |
| CIS  | N10  | Kaizen PLM                                      | E01      | TOPREGAL                                  | B11B | Particular Sciences Ltd                     | Z23 |
| Cobots.ie  | J03  | Kempston Controls                               | T04      | TRUMPF Laser + Machinery Ireland Limited  | J04  | Petrochem                                   | Y08 |
| CombiLift  | Q01  | KeyGreen  | A16      | University of Limerick                    | D08  | Pharmadule Morimatsu AB                     | Y34 |
| Compar   | E03  | Keypoint  | D10      | UX&Why                                    | V09  | Progressive Recovery, Inc                   | X08 |
| Compliance Engineering Ireland Ltd                   | G02  | Kilkenny Welding Supplies                       | F06      | VDE Testing and Certification Institute   | W01  | Réalta Technologies                         | X12 |
| Connect Install Limited                              | K11  | Killala Precision Components Ltd                | E02      | Vector2Transform                          | E21  | Sartorius                                   | Y05 |
| Conroy Pallets                                       | N06A | KUKA & Swisslog                                 | H01      | VEI Global                                | K15  | Sharp Group - Raising the bar               | L08 |
| ControlSoft Automation Systems Ltd                   | N06  | Lang - Technik (Irl )/MTD Precision Engineering | F09      | Videojet                                  | J01A | Shorcontrol Safety                          | X15 |
| Corporate Enforcement Authority                      | L09  | Lauralu UK Ltd                                  | H08      | Visas Ireland                             | E14A | Sonoco Thermosafe                           | R11 |
| Creative Spark Enterprise FabLab & Formlabs          | H14  | Machinelab Ltd                                  | U12B     | VisiatiV                                  | U09  | Thermo Fisher Scientific                    | Y29 |
| CUBIC-Modulsystem A/S                                | P05  | Martinsini Group                                | P10      | Vision 3D Solutions                       | F01A | Thomson Process Equipment & Engineering Ltd | X18 |
| Cullen 3D Design                                     | W09  | Martin Packaging                                | H04      | Vision Green Consultancy                  | D04  | Verde Energy Group                          | Y14 |
| Customs Support                                      | I04  | Mason Technology                                | O06      | Vision Components                         | L02  | Wanzl                                       | Y30 |
| Customs Wise & AEB                                   | G13  | Megatech Europe Ltd                             | U12      | Wanzl                                     | Y30  | Westbourne IT Global Services               | Y10 |
| Dachser  | K01  | Mitsubishi Electric Ireland                     | L02A     | Waveform                                  | G08  |   |     |
| Demesne Electrical                                   | G07  | Modula/Quiptech                                 | R05      | WeeV                                      | A17  |   |     |
| Department for Business and Trade                    | I06B | Moffett Automation                              | H02B     | Welditz                                   | R12  |   |     |
| DesignWise   | C08  | MPAC Automation & Controls                      | U06      | WEW Engineering Ltd                       | V16B |   |     |
| DGD Shredding  | D02  | M Pack  | G01      | Winsource Electronics                     | Q04  |   |     |
| Digital Doors  | M03  | Multifeed Europe                                | R06      | WISE MES                                  | H01A |   |     |
| Digren Energy  | A11  | MyReports.Online                                | J14A     | Wrxflo                                    | F05  |   |     |
| Douglas Control & Automation                         | H07  | Next Level Skillnet/Supply Network Shannon      | B08      | XtraPension                               | C10  |   |     |
| Dowds Energy Solutions                               | E13  | Nilfisk   | L20      | YONGLI Belting UK & Ireland/RF Clarke Ltd | B02  |   |     |
| DPS Rockpak  | V15  | NPP   | R10      | Your IT Solutions Ltd                     | A01  |   |     |
| Drivalia   | J13  | NSAI  | W08      | Zetes                                     | E16A |   |     |
| Dublin Chamber                                       | A19  | OEESystems                                      | G03      | Zoidii                                    | R03  |   |     |
| Dublin City University                               | D12  | One Stop Fulfillment                            | V10      |   | H11B |   |     |
| DWN Instrumentation Ltd                              | F04  | Ortus Managed IT & Cloud                        | E19      | <b>ENGENUITY CLUSTER</b>                  |      |   |     |
| E. Fox Engineers Ltd                                 | D01  | P&T Precision Engineering                       | Q05      | Acentryx                                  | N07  |   |     |
| Easy Customs   | I06A | PCR Recruitment                                 | K09      | Applied Concepts                          | L17  |   |     |
| ECS Turboshaw and Dry Ice Cleaning Ireland           | U10  | Phoenix Contact                                 | F01      | Cooney Precision                          | M05  |   |     |
| EIT Manufacturing Central GmbH                       | A21  | Pinery  | E08      | DTS                                       | M04  |   |     |
| EMC  | K03  | Priority Metrix                                 | E17      | Engenuity Cluster                         | N08  |   |     |
| ENERPOWER  | P14  | Pro-Reliability Solutions                       | C05      | Strikebox                                 | L18  |   |     |
| Engenuity Cluster L18/L17/M05/M04/N07/N08            | R09  | Profitsflow                                     | H09      | <b>SNS CLUSTER</b>                        |      |   |     |
| Engineering Industries Ireland                       | H11  | ProGlove  | L15      | Aaron PCB                                 | B06A |   |     |
| Enterprise Ireland Technology Gateways               | P09  | Protel In Ireland                               | E13B     | DesignWise                                | C08  |   |     |
| Enterpryze   | Q02A | PV Generation Limited                           | F12      | Hybrid TP                                 | A10  |   |     |
| ERS IT Solutions                                     | P04  | Quantum 3                                       | L13      | Next Level Skillnet/Supply Network        |      |   |     |
| European Springs & Pressings Ltd                     | J10  | Quitmann O'Neill Packaging Limited              | V17      | RTR Electronics                           | C06  |   |     |
| Ewals Cargo Care Ltd                                 | K04  | R-Tek Manufacturing                             | O05      | Shannon                                   | B08  |   |     |
| Exalens  | S03  | Reilly Plastics                                 | J02      | <b>INTERNAL VEHICLES</b>                  |      |   |     |
| Exergy   | V16  | Rhenus  | H02A     | Rittal & EPLAN                            | A01A |   |     |
| exida  | H15  | Rittal & EPLAN                                  | A01A     | TESLA                                     | A01B |   |     |
| EY   | N03  | RS Ireland                                      | N02A     | <b>EXTERNAL DISPLAYS</b>                  |      |   |     |
| FAST Technologies                                    | F01B |   |          | Circle K                                  |      |   |     |
| Fastenal   | P04A |   |          | IFM                                       |      |   |     |
| Fitfactory Technology Ltd                            | P11  |   |          | Linde Material Handling                   |      |   |     |
| FRS Recruitment                                      | H17  |   |          | TESLA                                     |      |   |     |
| FTA Ireland  |      |   |          |   |      |   |     |





**Engineering  
Industries Ireland**  
ibec

# Engineering a better future



**Engineering a better future**

[www.engineeringindustriesireland.ie](http://www.engineeringindustriesireland.ie)

 @engineering\_ibec

